



BLACK HOLE SYMMETRY

USER MANUAL

COLLISION DEVICES
OUR WORK, YOUR VIBRATIONS





BLACK HOLE SYMMETRY

USER MANUAL

THANK YOU FOR BUYING ONE OF OUR PEDALS. THANK YOU FOR SUPPORTING TWO PASSIONATE PERSONS AND THE FRENCH ARTISANS.

WE ARE SURE IT WILL PLEASE TO YOU AND IT WILL HELP YOU TO PUSH THE LIMITS OF YOUR CREATIVITY.

FEEL FREE TO SHARE YOUR FAVORITES CONTROLS, YOUR AUDIO CLIPS AND YOUR SUGGESTIONS VIA CONTACT@COLLISIONGEARS.COM OR VIA THE SOCIAL NETWORKS.

PLEASE TAKE TIME TO READ THE USER MANUAL BEFORE DIVING INTO YOUR BLACK HOLE SYMMETRY.

*WE WILL RELATE THE JOEL'S TRIP INTO THE BLACK HOLE TO UNDERSTAND HOW IT WORKS.
WE RECEIVED HIS MESSAGES BY RADIO COMMUNICATIONS BUT HE DOESN'T ANSWER ANYMORE..*

WARNING

THE BLACK HOLE SYMMETRY IS AN EFFECT PEDAL FOR GUITAR, BASS AND SYNTHESIZER.

USE ONLY A +9V DC ADAPTER WITH A NEGATIVE CENTER.

AN UNREGULATED POWER SUPPLY OR A HIGHER VOLTAGE COULD CAUSE SOME NOISE OR DAMAGE THE CIRCUIT.

THAT KIND OF PROBLEM IS NOT INCLUDED IN OUR WARRANTY.

DUE TO ECOLOGICAL REASONS, THE PEDAL DOESN'T WORK WITH A BATTERY.

OUR PRODUCTS ARE NOT TESTED ON ANIMALS AND CERTIFIED WITHOUT GLUTEN.

MAXIMUM CURRENT DRAW	250 mA
VOLTAGE	+ 9V DC (CENTER NEGATIVE)
INPUT IMPEDENCE	1 MO _{HM}
OUTPUT IMPEDANCE	1 KO _{HM}
ALL ANALOG DRY SIGNAL PASS	ALL DIGITAL WET SIGNAL PATH WITH 20Hz-15kHz FREQUENCY RESPONSE
SIZE	189 x 120 x 56 mm
WEIGHT	800g

THE PEDAL IS TRUE BYPASS.

BLACK HOLE SYMMETRY

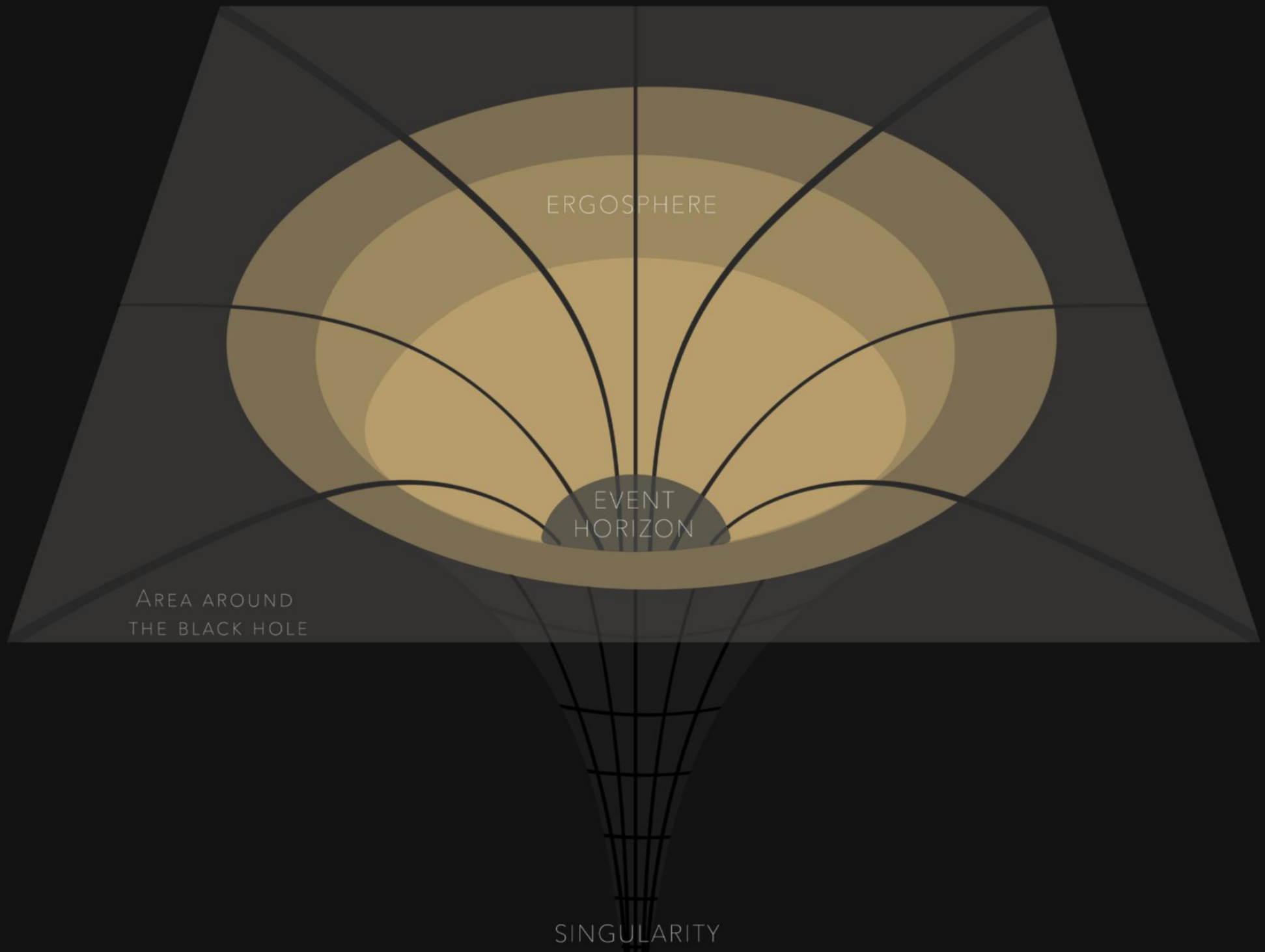
REACH THE INFINITY.

THE BLACK HOLE SYMMETRY REPRESENTS OUR INTERPRETATION OF A BLACK HOLE.

WE ARE PART OF THOSE WHO ARE CAPTIVATED BY THE HUGENESS OF SPACE AND CELESTIAL OBJECTS.

THE INFINITELY LARGE FEEDS OUR CONVERSATIONS AND INSPIRES US.

LET YOUR CURIOSITY GET THE UPPER HAND AND LET'S EXPLORE TOGETHER YOUR BLACK HOLE SYMMETRY.



THREE STEPS TO EXPLORE YOUR PEDAL

THE BLACK HOLE SYMMETRY HAS BEEN DEVELOPED TO REPRESENT THE AUDIO AND VISUAL ASPECT OF A BLACK HOLE. AS YOU MAY KNOW THERE'S NO SOUND IN SPACE. SO WE IMAGINED THE FEELINGS WE WOULD HAVE IF WE COULD BE IN FRONT OF THIS HUGE MASS.

WE DECIDED TO STRUCTURE THE BLACK HOLE SYMMETRY INTO THREE DIFFERENT PARTS.

THE FIRST PART IS THE "ERGOSPHERE".
YOU WOULD FIND FIVE CONTROLS HERE : MIX, TIME, FEEDBACK, MODULATION AND SPEED.

THE "EVENT HORIZON" IS THE SECOND PART. THERE ARE FOUR CONTROLS : MIX, ECHO, PITCH AND RADIANCY.

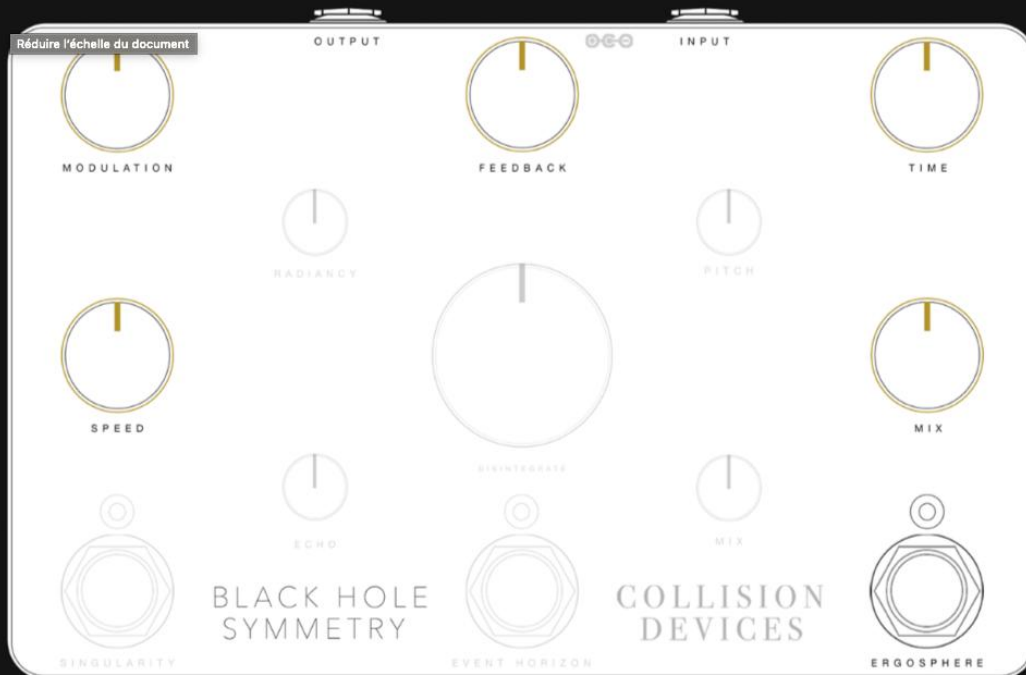
AND THEN THE THIRD AND THE LAST PART IS THE "SINGULARITY".
IT IS COMPOSED OF A SINGLE POTENTIOMETER NAMED "DISINTEGRATE".



SLOWLY DISTORT THE TIME IN THIS FIRST STEP OF OUR JOURNEY INTO THE BLACK HOLE SYMMETRY.
THERE ARE FIVE CONTROLS ON THE FRONT FACE AND A TRIMMER INSIDE THE PEDAL.
THESE FIVE CONTROLS ARE MIX, TIME, FEEDBACK, MODULATION AND SPEED.
TWO OSCILLATORS MODULATE ECHO CIRCUIT BASED ON THE PT2399 CHIP WHICH ALLOWS YOU TO OBTAIN SOME LONG
BLANKETS IN PERPETUAL MOVEMENT.

*«I FEEL A SORT OF ATTRACTION. UNCONSCIOUSLY, MY CURIOSITY AVOID ME TO FIGHT.
MY WORDS BECOME DISTORTED. SOMETIMES FAR FROM ME. SOMETIMES ECHOES IN MY HEAD.
STRANGE FEELING. AS IF THE VOID WAS AN OCEAN. SLIGHTS WAVES TO START.
THEN THEIR STRENGTH INCREASE. I FEEL THAT THE TIME ISN'T PASSING THE SAME WAY. FASCINATING.»*

ERGOSPHERE



ERGOSPHERE - MODULATION DELAY : SETTINGS

MIX : PROPORTION OF WET SIGNAL IN THE MIX.
IT CAN BE AS LOUD AS DRY SIGNAL.

TIME : TIME BETWEEN EACH REPETITION (FROM 0s TO 1s)
THE MORE THE TIME INCREASES, THE MORE THE SIGNAL IS LO-FI.

FEEDBACK : NUMBER OF REPETITIONS.

SPEED : SPEED OF THE MAIN OSCILLATOR WHICH MODULATES
THE REPETITIONS (0.1 TO 20 Hz)

MODULATION : PROPORTION OF MODULATION IN THE DELAY
SIGNAL.

TRIMMER* (PAGE : «TIPS») : SPEED OF THE TRIANGLE OSCILLATOR
(0.68 TO 27 Hz, BASICALLY SET TO 27 Hz).



ERGOSPHERE : FAVORITE SETTINGS

A SHORT DELAY MODULATED BY A MID TEMPO MODULATION.

THE BEST WAY TO APPROACH A **BLACK HOLE**.

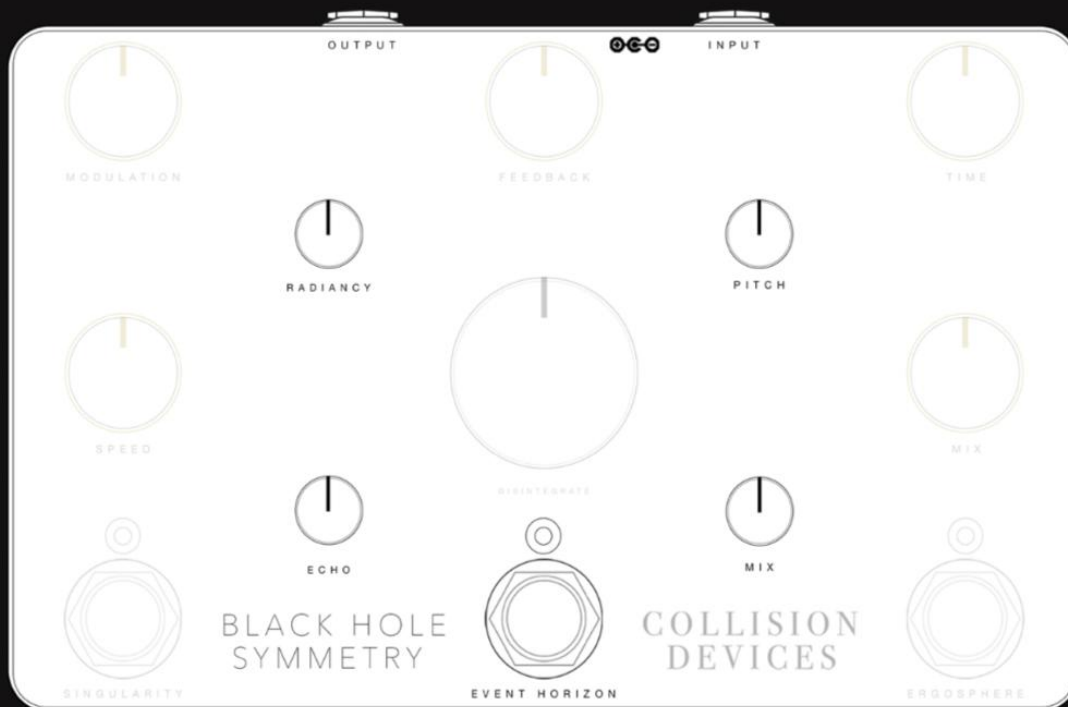
THE EVENT HORIZON IS THE NO RETURN POINT OF A BLACK HOLE.
THE SPACE BECOME DISTORTED AND TIME ESCAPES FROM YOUR HANDS.

WE REALLY WANTED TO BRING THE ASPIRATION PHENOMENON OUT.

A DSP MODIFIES THE PITCH OF THE NOTE WHILE ADDING A HIGH PITCHED NOTE.
THE LONELINESS AND PRECIPITATION FEELING AT THE HEART OF THE BLACK HOLE ARE CHARACTERIZED BY A DEEP ECHO.
IT HAS AN EFFECT ON THE GUITAR SIGNAL AND ON THE HIGH PITCHED HARMONY.

*«IT'S IMPOSSIBLE NOW TO GO BACK.
I SEND THESE LAST MESSAGES WITH THE HOPE THAT SOMEONE WILL CATCH THEM ONE DAY.
EVERYTHING IS BEAUTIFUL. I HAVE THE FEELING THAT THE STRENGTHS STRONGLY INCREASE.
WAVES BECOME WHIRLWIND. THE ATTRACTION STRENGTH IS HUGE.
AS IF THE INFINITE WORD TOOK ALL HIS SENSE HERE. I WILL NOT RESIST.
I DON'T WANT TO FIGHT. I WANT TO GO AT THE END. MAYBE I WILL TRAVEL IN SPACE.
OR IN THE TIME. WHO KNOWS?»*

EVENT HORIZON



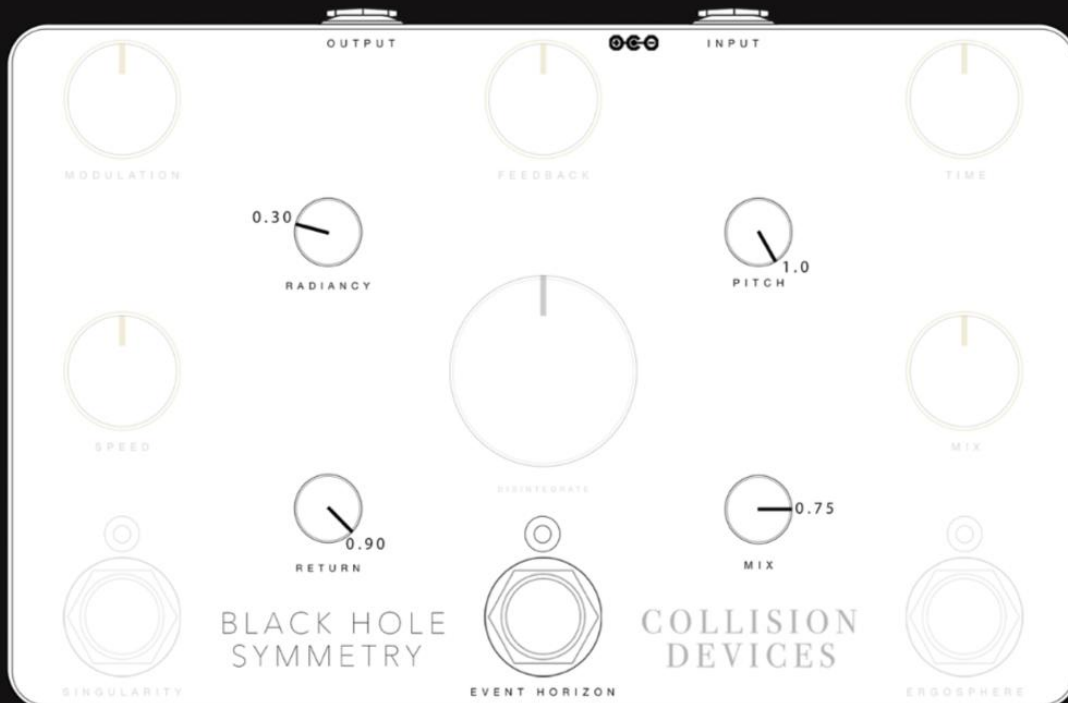
EVENT HORIZON - SPATIAL REVERB : SETTINGS

MIX : PROPORTION OF WET SIGNAL IN THE MIX

PITCH : SHIFT THE PITCH OF THE NOTE.
COULD SHIFT TO THE FIFTH.

RADIANCE : PROPORTION OF PITCH SHIFTER IN THE ECHO
SIGNAL. ADD BRIGHTNESS TO THE ECHO.

ECHO : ECHO TIME (MAX 15s)



EVENT HORIZON : FAVORITE SETTINGS

A DEEP REVERB ENHANCED BY A FIFTH PITCH SHIFTING.

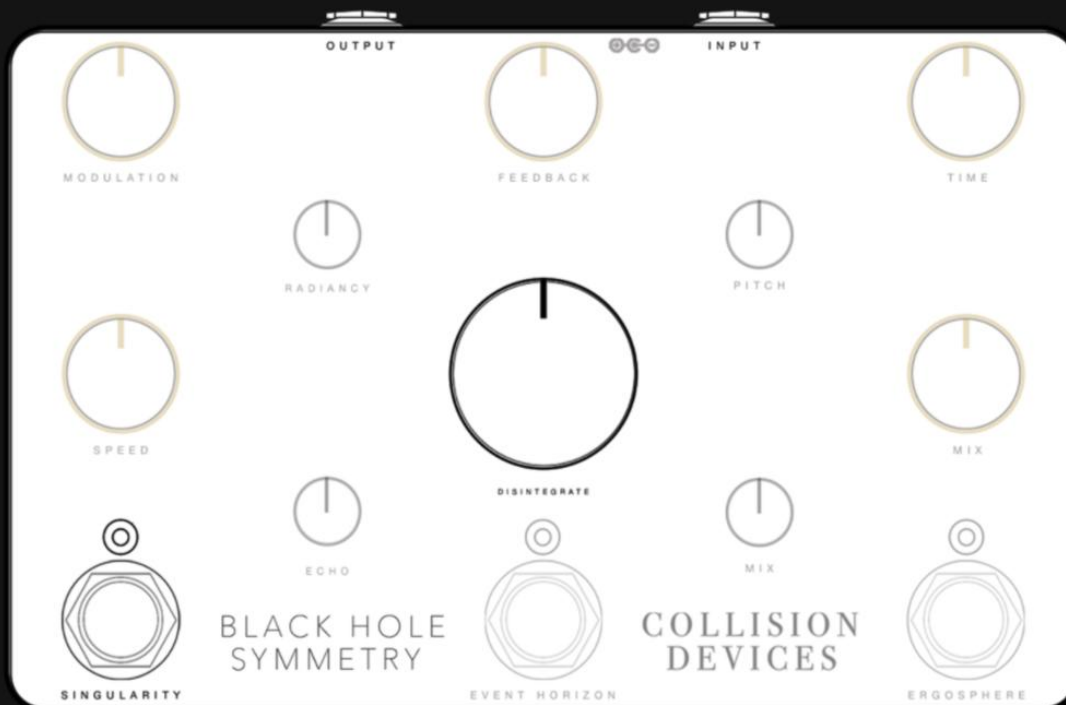
GRAVITY STRENGTH BECOMES UNBEARABLE.

SINGULARITY

THAT HUMMING IS A SIGN OF THE END.
OR THE START. NO ONE KNOWS.
HOWEVER, IT IS SURE THAT SPACE AND TIME ARE GATHERING INTO A SINGLE POINT.
THE ENERGY IS MAXIMAL.
LET YOUR BLACK HOLE SYMMETRY ROAR, IMplode, DISINTEGRATE ITSELF.

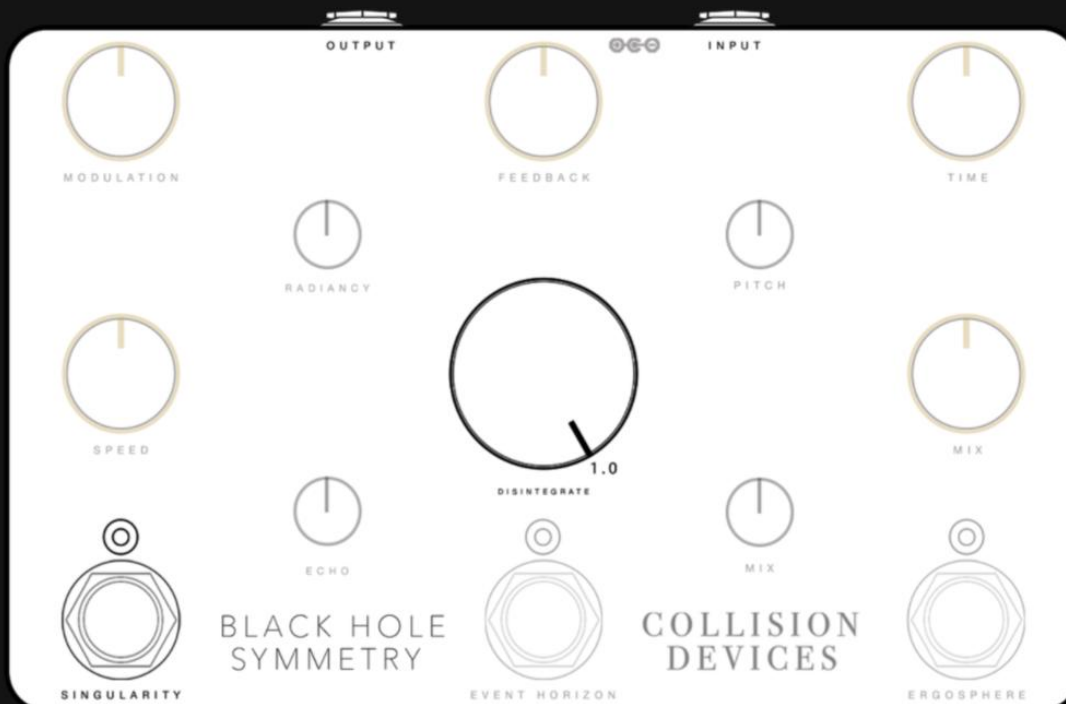
«ARGGGH! BRRRR ZRK SCHHH»

LAST WORDS FROM JOËL.



SINGULARITY - DESTRUCTION FUZZ : SETTINGS

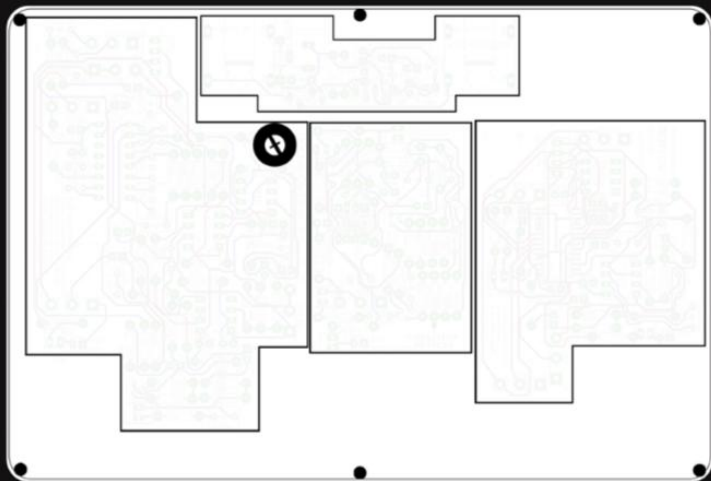
DISINTEGRATE : VOLUME OF THE FUZZ.



SINGULARITY : FAVORITE SETTINGS

FORGET THE FACT THAT YOUR DRUMMER PLAYS LOUDLY.

GOOD THINGS TO KNOW



TO BETTER ADJUST THE SECOND OSCILLATOR, TURN THE “MODULATION” TO 1 AND THE “SPEED” TO 0. THE MODULATION HEARD IS REGULATED BY THE TRIMMER.

WITH THE HELP OF A SCREWDRIVER, TURN THE TRIMMER TO ADJUST ITS FREQUENCY FROM 0.68 Hz TO 27 Hz

PLEASE USE A CORRECT POWER SUPPLY. ISOLATED, +9V DC / 250mA. A GOOD POWER SUPPLY RESOLVES MOST OF POTENTIAL ISSUES.

THE “FEEDBACK” SETTING SELF OSCILLATES FROM 0,75.

WHEN YOU DON’T WANT THE SELF OSCILLATION, TURN THE FEEDBACK TO 0, THEN TO THE VALUE YOU WANT.

WHEN YOU CAN HEAR THE SELF OSCILLATION EVEN THOUGH THE DELAY IS DISABLED, TURN THE FEEDBACK SETTING TO 0 OR AT A LOWER VALUE THAN 0,7.

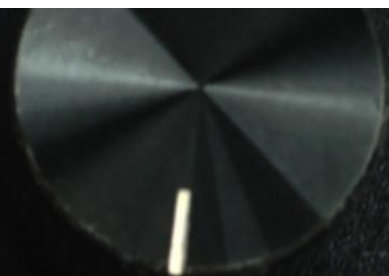
THE “SPEED” SETTING CAN PRODUCE A HUM AT AN AUDIBLE FREQUENCY WHEN IT’S SET BETWEEN 0 AND 0,1. IF IT HAPPENS, TURN IT TO 0 THEN YOU CAN PUT IT AT THE VALUE YOU WANT.

THE “MODULATION” SETTING MODIFIES THE DELAY TIME. WHEN YOU TURN THE MODULATION CLOCKWISE, IT SLOWS DOWN THE DELAY TIME A LITTLE. EVEN THOUGH THE SPEED IS AT 0.

THE SAWTOOTH OSCILLATOR REGULATED BY THE TRIMMER CAN BE HEARD WHEN THE SINGULARITY IS ENABLED AND THE “DISINTEGRATE” SETTING IS AT MORE THAN 0,15.

SOME OF THE GUITAR MICROPHONES CAN INTERACT WITH THE SINGULARITY WHEN THE “DISINTEGRATE” SETTING IS PUT AT MORE THAN 0,75. IT PRODUCES AN ALMOST IMPERCEPTIBLE HIGH PITCHED WHISTLING EVEN IF THE SINGULARITY IS DISABLED. REDUCE THE “DISINTEGRATE” VALUE OR TURN OFF YOU GUITAR PICKUPS.

THANKS.



SPEED



SINGULARITY

DISINTEGRATE

MIX

ECHO

COLLISION
DEVICES

BLACK HOLE
SYMMETRY

EVENT HORIZON



COLLISION DEVICES

CONTACT@COLLISION.COM